

## Cornhusker Industrial Park

Available Acres: 260

### Address:

7870 West Old Potash Highway  
Grand Island, NE 68803 (Hall)

### Property and Area Description:

Once the former Cornhusker Army Ammunition Plant, the Grand Island Area Economic Development Corp. has ownership of 260 acres currently used for agricultural production. This unique site is serviced by both Burlington Northern Santa Fe and Union Pacific Rail Roads with a short line connecting the two. Residential housing is restricted within a 20 square mile radius.

This site is outside city limits, but in close proximity to Grand Island and surrounding communities.

### Site Details:

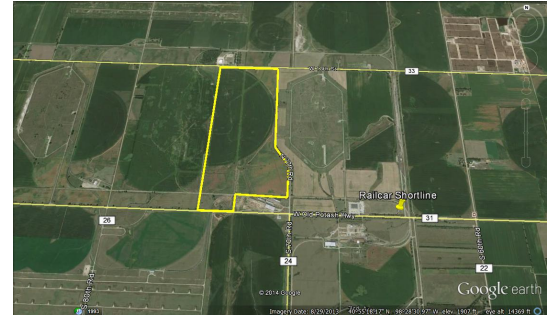
Available Acres: 260	Adjacent Avail. Acres: 720
Topography: 1902-1905	Setting: Agricultural Land
Zoning: Agriculture, Industrial, Industrial-Heavy, Industrial-Light	Within City Limits: No

### Transportation:

Nearest Interstate: I-80	Distance (miles): 11.5
Nearest 4-Lane Highway: US Highway 281	Distance (miles): 4.5
Nearest Commercial Airport: Central Nebraska Regional Airport	Distance (miles): 10.5
Rail Served: Yes	

### Utilities:

Electric Distribution: Southern Public Power  
Natural Gas Distribution: NorthWestern Energy  
Water: City of Grand Island and/or on-site wells  
Sewer: Self-Contained Sewer System & City sewer available  
Local Telecommunications Service: Windstream, CenturyLink, Charter Communications, Hamilton Communications, KDSI



### Contact:

Dave Taylor  
Grand Island Area Economic Development Corporation  
P.O. Box 1151  
Grand Island, Nebraska 68802-1151  
Phone: 308-381-7500  
E-Mail: dtaylor@grandisland.org  
Web site: www.grandisland.org

### Offering:

Sale Price: Negotiable  
Lease Rate (Sq. Ft./Per Year): Negotiable