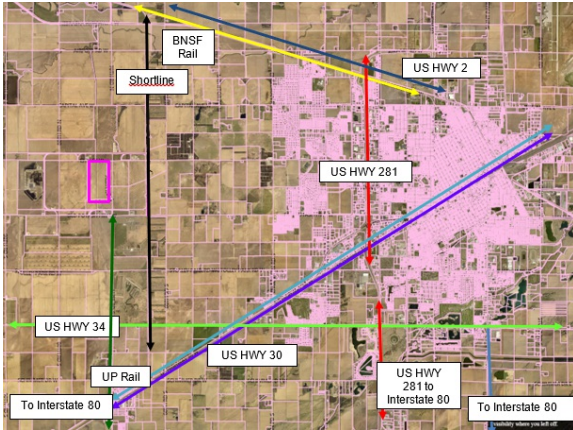


Cornhusker Industrial Park

13th Street and Alda Road | Grand Island, NE | US | Hall County

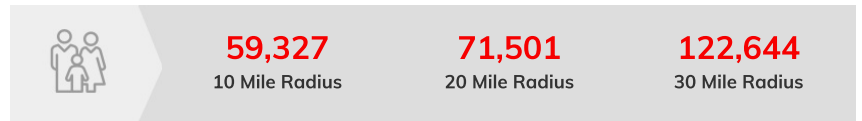
Available Acres: 175 |



Property and Area Description

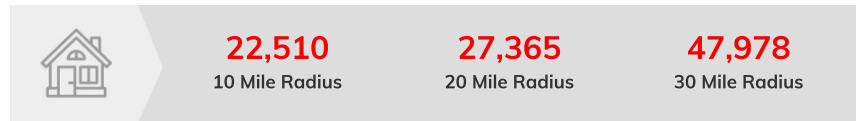
Cornhusker Industrial Park (CIP) is located 3.5 miles west of Grand Island city limits. Once used as a national defense site, the GIAEDC owns 175 acres of land within the industrial park. CIP is currently being used for agriculture production and is zoned AG-SI (Special Agriculture/Industrial Zone). Both Cornhusker Industrial Park & Southern Public Power's Energy Park (Option #3) lie between Burlington Northern Railroad and Union Pacific Railroad. A short line connects the two major railways allowing for the property to be dual rail served. The property has been declared blight and standard, allowing for the use of Tax Increment Financing (TIF). Both sites can be accessed by paved two-lane roads on both north and south ends of the sites.

Population



Source: ESRI®, 2024

Households



Source: ESRI®, 2024

Zoning:	Agriculture, Industrial
Topography:	Brownfield
Adjacent Available Acres:	600
Setting:	Other
Site Dimensions:	175
Last Updated:	May 29, 2024

Economic Development Contact

Mary Berlie
Grand Island Area Economic Development Corporation
123 N Locust St Suite 201B
Grand Island, NE 68803
(308) 381-7500 | mberlie@grandisland.org

Realtor/Owner Contact

Grand Island Area Economic Development Corporation
3083817500

Transportation

Nearest Highway: HWY 281 and HWY 30 (4.2 mi.)
Nearest Interstate: I-80 (8.3 miles mi.)
Nearest Airport: Central Nebraska Regional Airport (12.6 miles mi.)
Nearest Commercial Airport: Central Nebraska Regional Airport (12.6 miles mi.)
Rail Served: Yes
Rail Served By: BNSF Railway, Union Pacific Railroad
Rail Type: Active
Rail Accessible: Yes
Rail Infrastructure in Place: Yes

Utilities

Electric: Southern Public Power
Natural Gas: Tallgrass Interstate Gas Transmission
Water: City of Grand Island
Sewer: City of Grand Island
Telecommunications: Nebraska Link

Mary Berlie | President | Grand Island Area Economic Development Corporation
PO Box 1151 | Grand Island, NE 68802-1151 | (308) 381-7500 | mberlie@grandisland.org